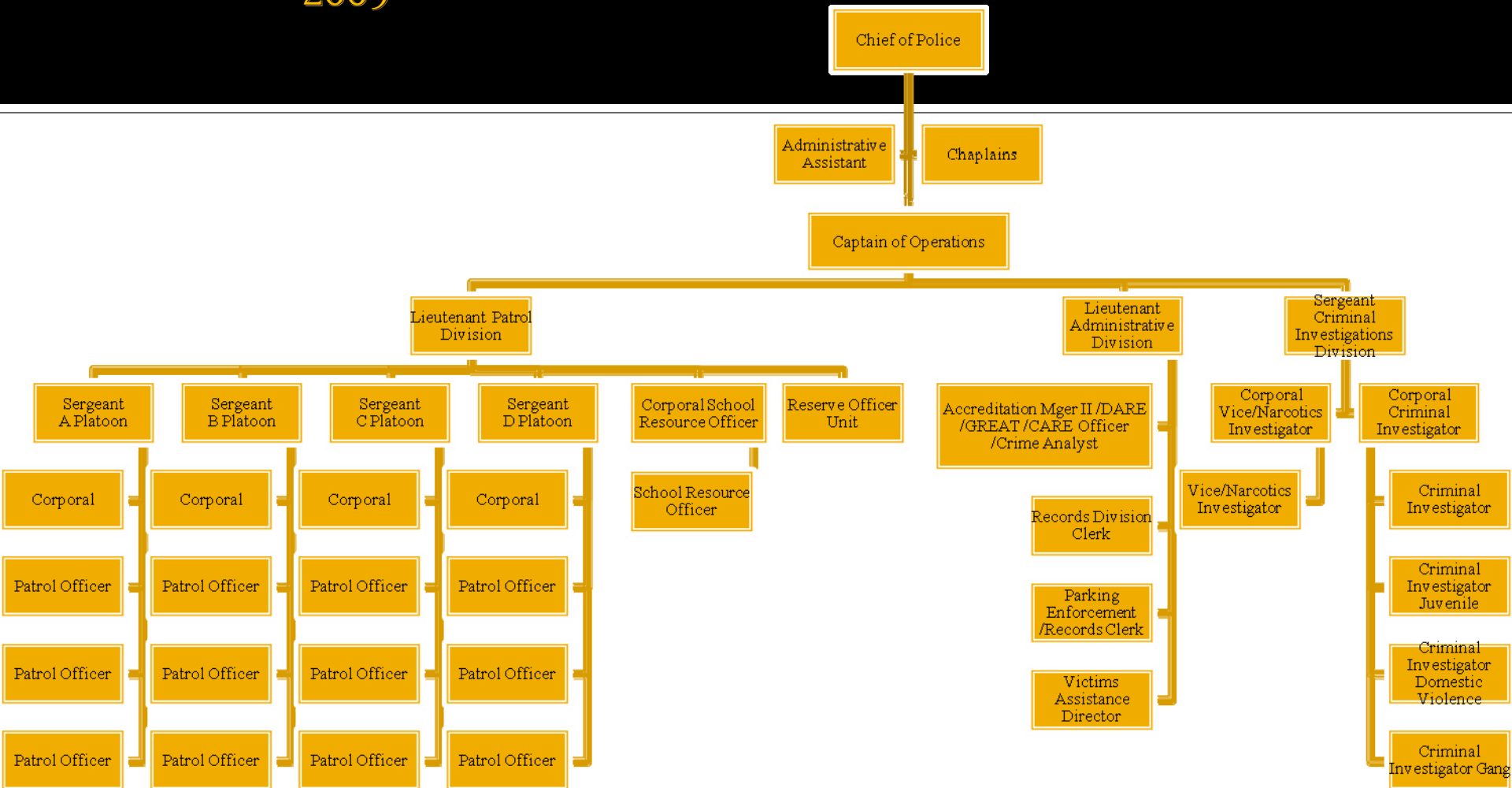


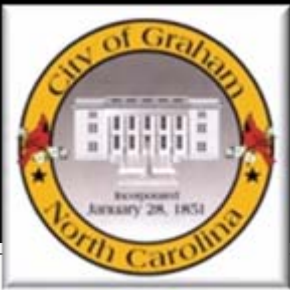
GRAHAM POLICE DEPARTMENT



Organizational Chart 2009

AGENCY STAFFING TABLE 2009





Chief of Police
JC Prichard

Administrative Assistance
To the Chief of Police
S Pugh

Chaplain
M Ryman

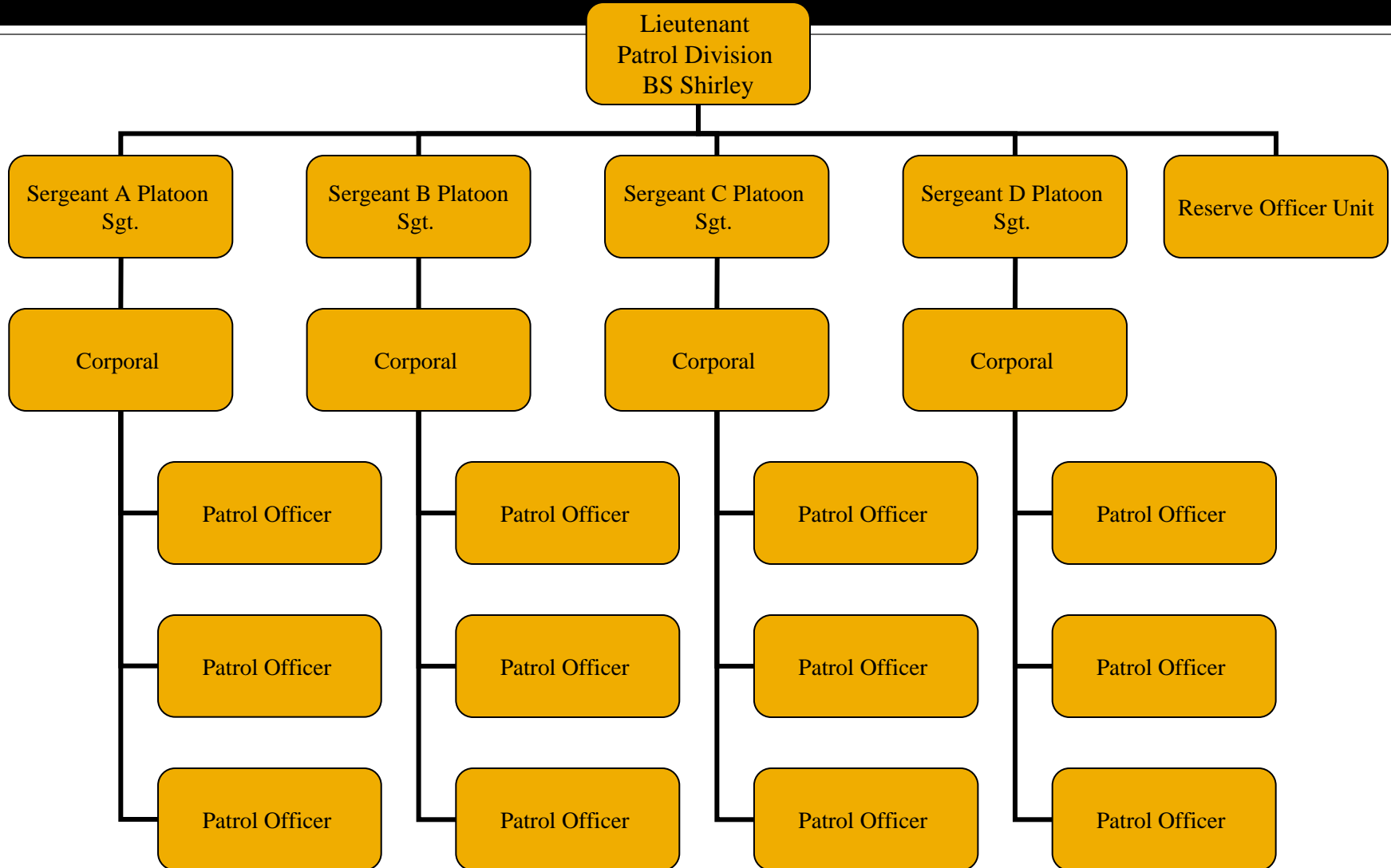
Captain
Field Operations
Bureau
SP McGilvray

Lieutenant
Patrol Division
BS Shirley

Lieutenant
Administrative
Services Bureau
AK Watkins

Sergeant
Criminal
Investigations Division
C Sharpe

Patrol Division



School Resource Officers

Corporal
Graham High School
School Resource Officer
P Acosta

Graham Middle School
School Resource Officer
GREAT Instructor

D Lewis

Administrative Services Bureau



Criminal Investigations Division

