

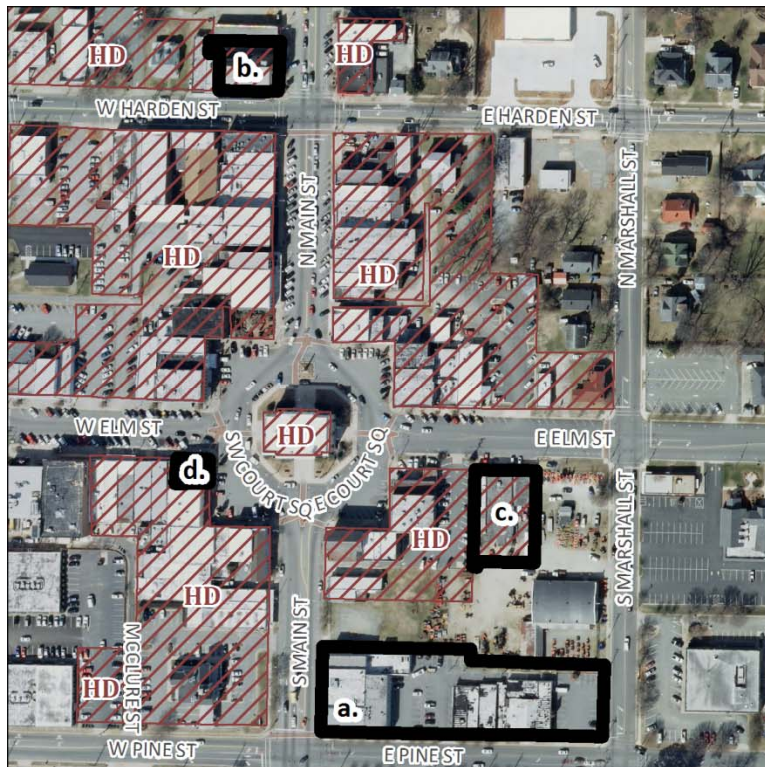


Historic District Commission

Meeting Agenda

November 28, 2012 at 5:00pm
Council Chambers, 201 S Main St

1. Approval of minutes of the October 10, 2012 meeting
2. Applications for the 2012-13 Façade Grant Program
Total City funds requested: \$9,919
 - a. Audrey McHugh, for McDavis Enterprises, located at 102 E Pine St and 146 & 150 S Main St
\$485, maximum City match of \$242
 - Clad window frames in white vinyl, to match work that was done on other window on this property with 2011-12 façade grant
 - b. Carolina Property Holdings, for East Coast Realty Group, located at 200 N Main St
\$7,345, maximum City match of \$3,672
 - Repair, repaint and reseal all windows and window frames to resolve wood damage, drafts and aesthetically improve, and to match colors of new fabric canopies (funded with 2011-12 façade grant)
 - Repair front metal entry canopy which is original to building to good condition and to match present fabric canopies
 - Point up and seal damaged brick/mortar areas of façade
 - Install lighting along metal canopy to provide exterior lighting
 - c. Court Square Development Group, for Farm Services, Extreme Graphics and Life Changes, located at 123 & 125 E Elm St
\$43,380, maximum City match of \$5,000
 - Install new layer of brick veneer using white, weathered brick; includes new footing for veneer
 - Restore brick archway around main entry door
 - Install new white doors and windows
 - Install a new blue metal awning over main entry door
 - Replace signage
 - d. Lee Laskody, for property located at 20 SW Court Square/102 W Elm St
\$2,010, maximum City match of \$1,005
 - Repaint the Elm St side of the building with the same colors; paint over the "Laskody Law Office" mural
 - Replace all window shutters (some of which have already fallen off)

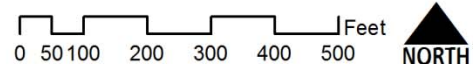


2012-13 Façade Grant Program Applications

- a. Audrey McHugh, 102 E Pine St and 146 & 150 S Main St
- b. Carolina Property Holdings, 200 N Main St
- c. Court Square Development Group, 123 & 125 E Elm St
- d. Lee Laskody, 20 SW Court Sq



**Historic District
Commission Meeting
November 28, 2012**



Prepared by the City of Graham Planning Dept. on 11/15/2012

This map was compiled from the GIS resources of the Burlington Regional GIS Partnership for public planning and agency support purposes. These resources include public information sources of different scales, time, origin, definition and accuracy, which may produce inconsistencies among features represented together on this map. Neither the City of Graham nor the Partnership shall be held liable for any errors in this map or supporting data. Primary public information sources from which this map was compiled, in conjunction with field surveys where required, must be considered for the verification of the information contained within this map.

3. Applications for Certificates of Appropriateness

- a. Carolina Property Holdings, 200 N Main St
 - For work proposed in the Façade Grant application; see item 2b above
- b. Court Square Development Group, 123 & 125 E Elm St
 - For work proposed in the Façade Grant application; see item 2c above
- c. Lee Laskody, 20 SW Court Square/102 W Elm St
 - For work proposed in the Façade Grant application; see item 2d above
- d. Crystal Waggoner, 205 N Main St
 - Install a new wall sign

4. Elect Vice Chair

A complete agenda packet is available at www.cityofgraham.com/boards.